

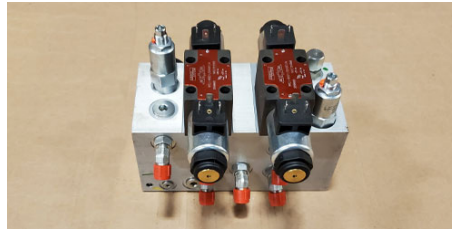
# Brand New SkyJack Parts Removed from Scissor Lift Machines



From Models: 3219, 3220, 4726, 4740



**Power Unit**  
\$629.00



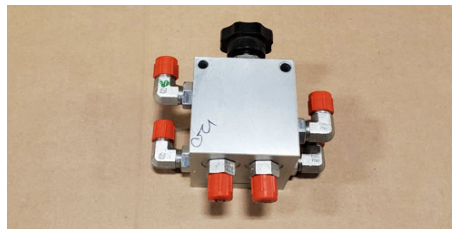
**Main Manifold**  
\$1,270.00



**Tires**  
\$226.00



**Ground Control Box**  
\$285.00



**Drive Manifold w/ Hardlines**  
\$425.00



**Display Module w/ Bracket**  
\$151.00



**Controller, EZ Lift 230- HP II**  
\$711.00



**Angle Sensor**  
\$142.00



**Battery Cables**  
Call for Pricing



**Horn**  
\$17.00



**Main Disconnect**  
\$45.00



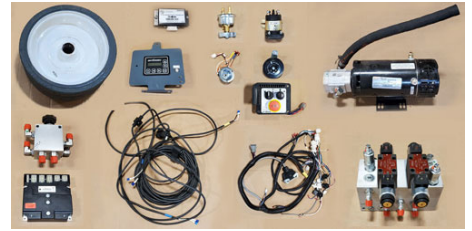
**Motor Contactor**  
\$77.00



**E-Lower Switch Assembly**  
Call for Pricing



**Motor Contactor w/  
EE Enclosure**  
\$77.50



**Machine Kit**  
\$2,000.00



S81W18561 Gemini Drive, Muskego, WI 53150  
414-446-8412 | [www.BaileyCranes.com](http://www.BaileyCranes.com)