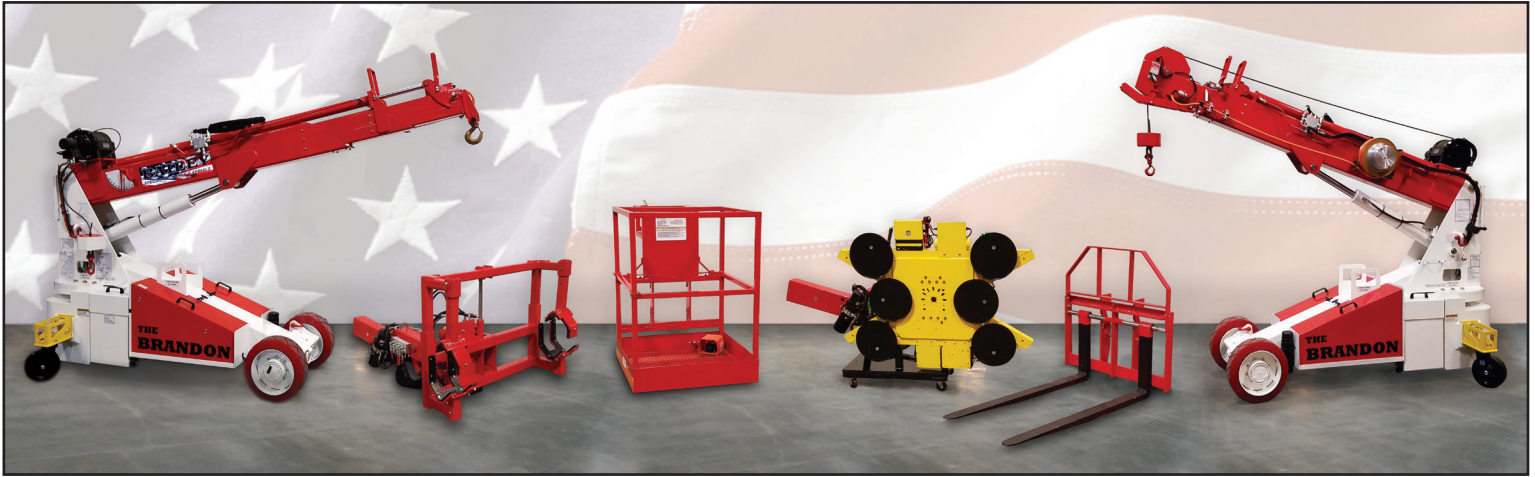


# THE BRANDON™ 6

*The World's Most Versatile Lifting Machine*



**Model:** Brandon 6

**Hoist Capacity:** 6,000 lbs

**Fork Capacity:** 2,500 lbs

**Glazier Capacity:** 1,100 lbs

**Robot or Jib Capacity:** 1,000 lbs

**Winch Capacity:** 3,000 lbs or 1,950 lbs

**Power:** 24Volt 7HP Electric Motor

**Steering:** Rear Wheel

**Drive:** 2 Wheel Drive and Braking

**Boom:** Base unit, 2 telescoping booms and one manual pull-out boom. Attachments replace pull-out boom.

**Weight:** 5,500 Lbs + Attachment

**Rated Load Limiter:** Displays rated load and actual load. Stops when overload is reached. Detects attachment and adjusts load parameters.

**Charger:** On-board 110V

**Optional:** "EE" Class I, Division 2 Certification

**Radio Remote Controls**

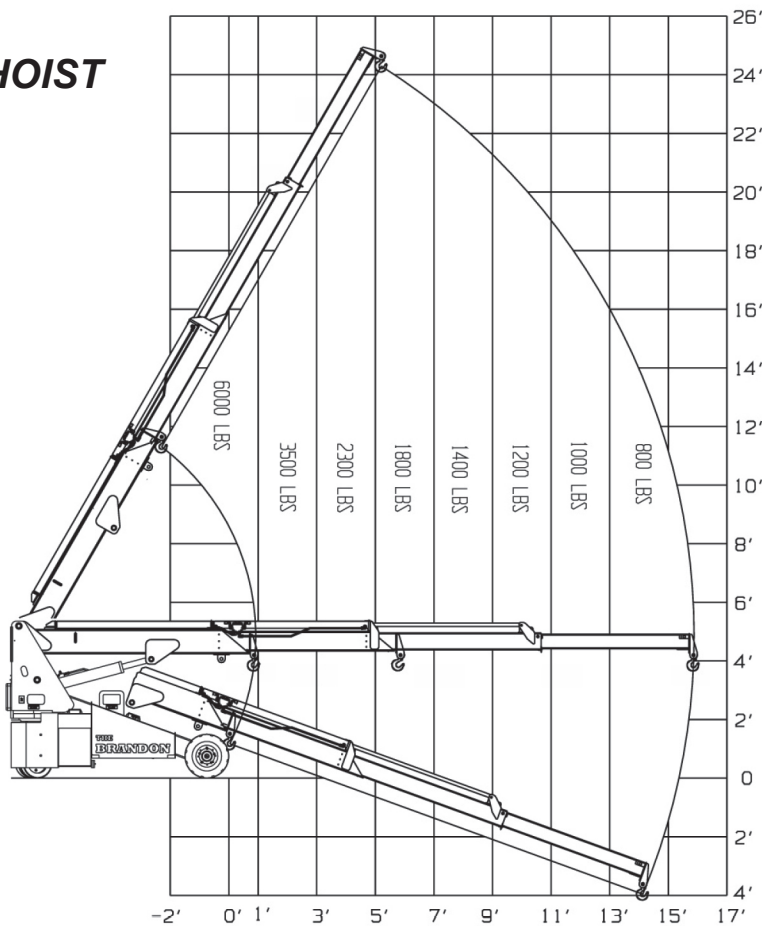


**Walkie Handle**

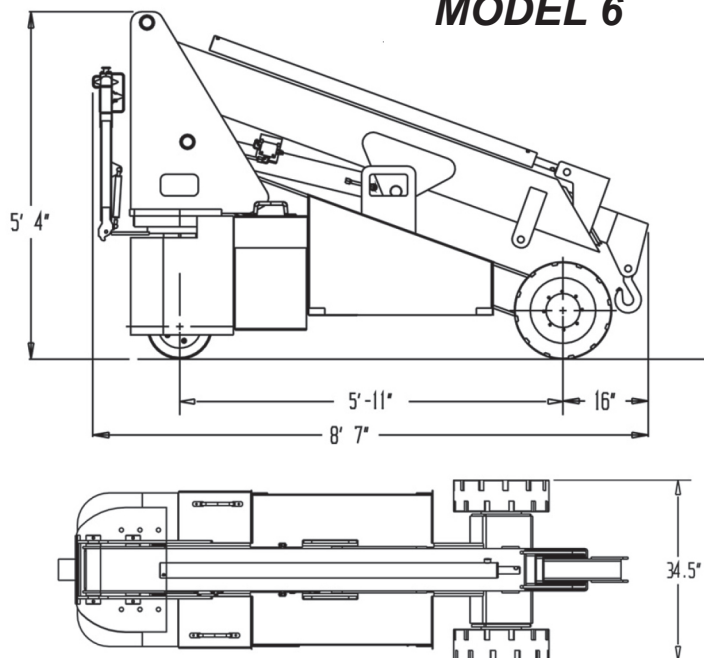


# ENGINEERING THE FUTURE OF LIFT EQUIPMENT

## HOIST

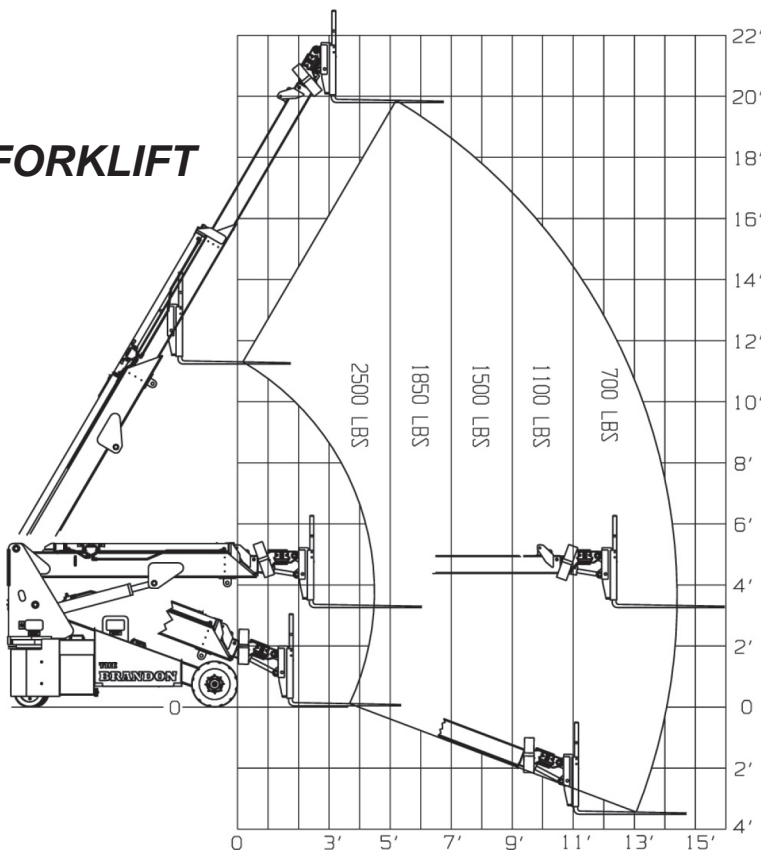


## MODEL 6

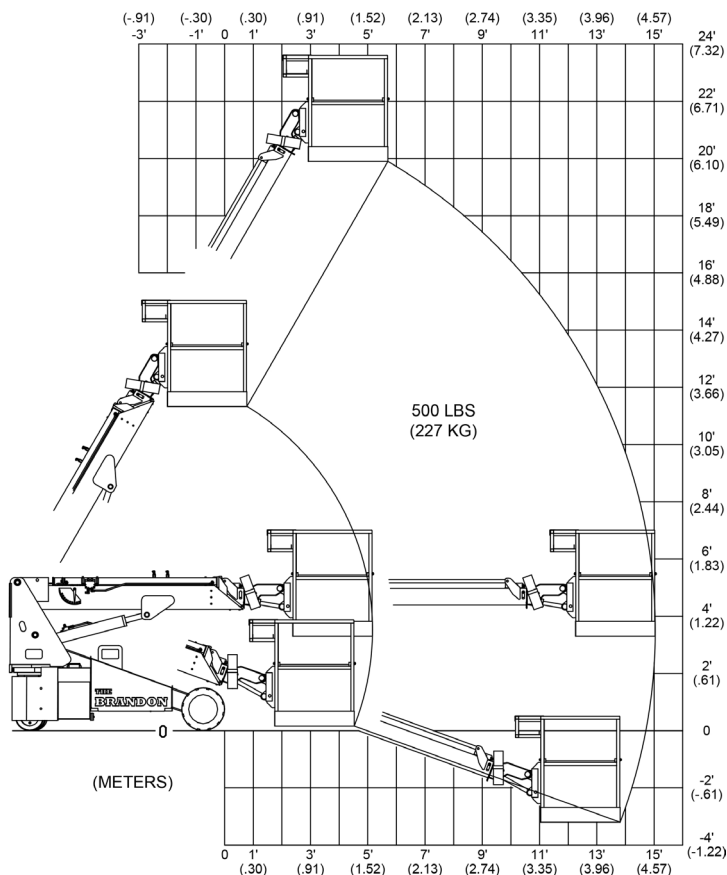


**34.5" WIDE SINGLE DOOR ACCESS**

## FORKLIFT

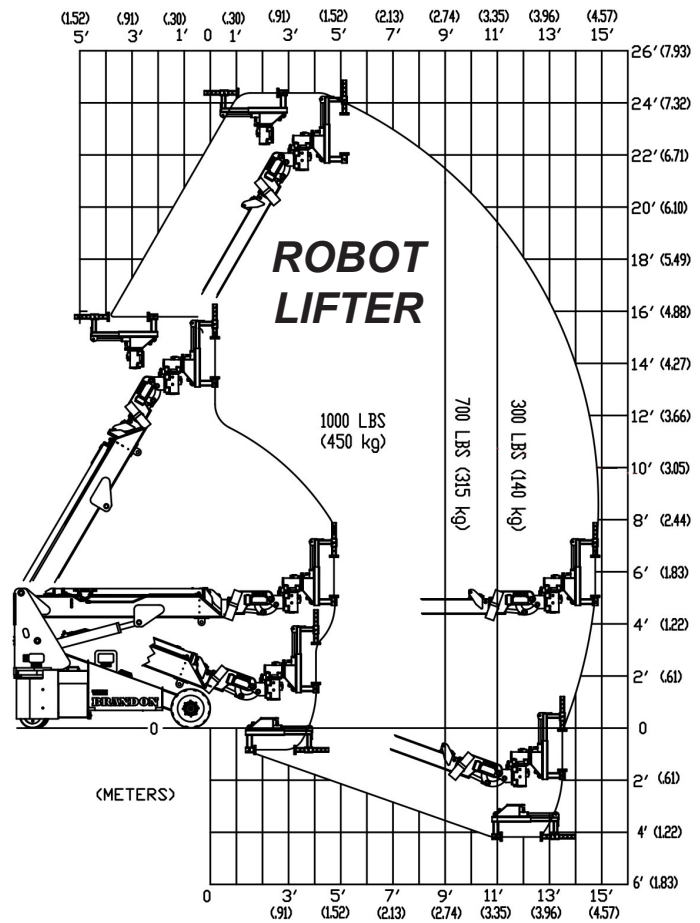
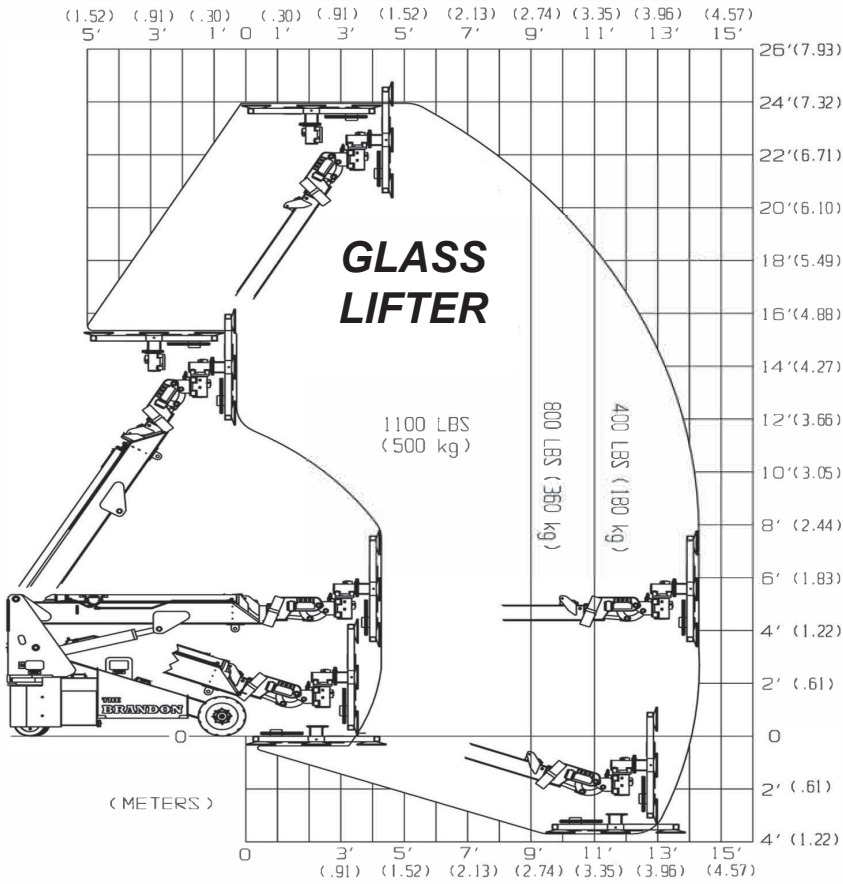


## MAN LIFT

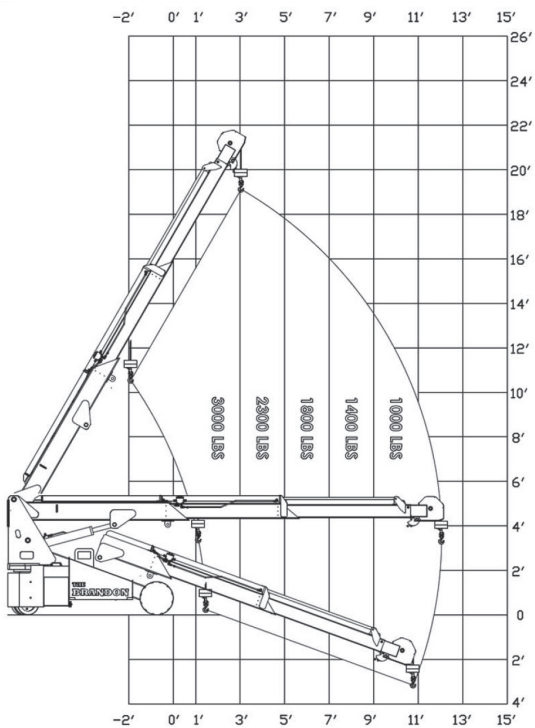


**\*\* MULTIPLE PATENTS PENDING \*\***

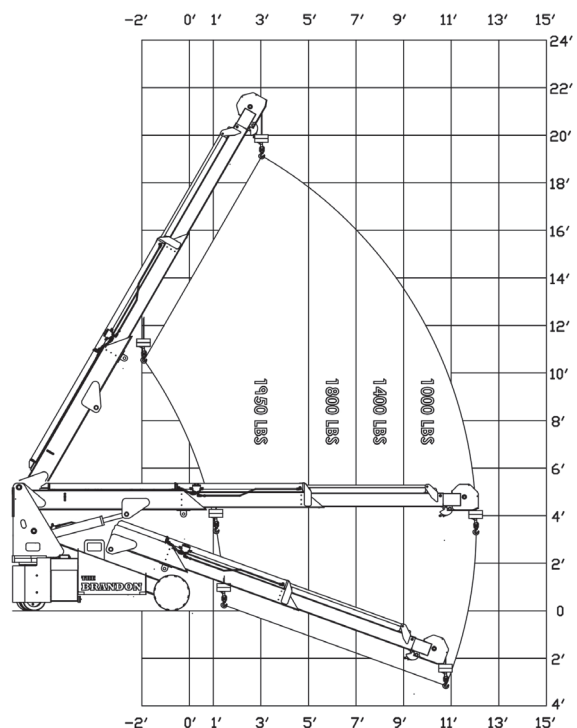
# ENGINEERING THE FUTURE OF LIFT EQUIPMENT



## 3,000 lbs WINCH

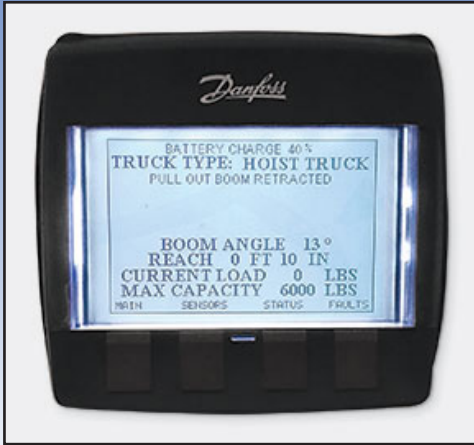


## 1,950 lbs WINCH





# Features



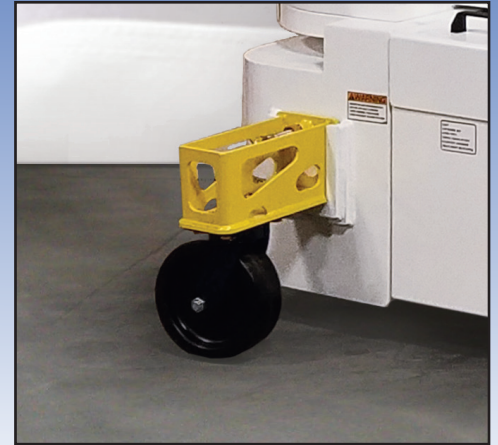
## Rated Load Limiter

Automatically detects attachment and adjusts loading parameters



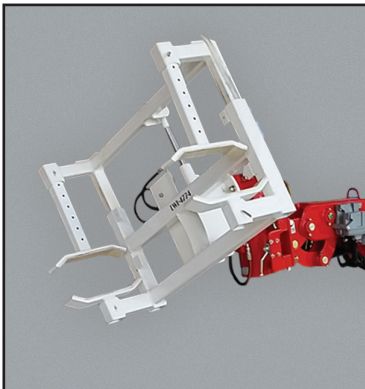
## Hydraulic Winch

- 3,000 lb Capacity - 90' Cable
- 1,950 lb Capacity - 230' Cable
- Simple Installation
- Construction Ready



## Optional Stabilizers

# Multiple Attachments



Robot



Man Basket



Winch



Forks



Glass



Hanging Glass

